

St John's Today

CARE FOR ALL GOD'S PEOPLE



AUTUMN 2025

**3-Monthly Magazine for the
Anglican Parish of St John
Old St John's Church, Te Awamutu
St John's Church, Te Awamutu
St Paul's Church, Rangiaowhia**

**If undelivered return to:
162 Arawata St, Te Awamutu
or let the office know
if you no longer wish to receive
this - Ph. 871-5568**

We commit to God and pray for the whanau of:

**RAYMOND REYNOLDS
BETTY JOHNSON**

Pastoral
CARE

Please advise the Parish Office on 871-5568
of any illness, hospital admissions or prayer requests of



Prayer Chain:

If you need someone to pray for you regularly, or if you know someone who is sick and needs prayer, please remember that the Prayer Chain is here to journey with you and in confidence.

Care for all God's people

I've just returned to my desk after co-hosting the first gathering of our Death Café for this year. It was obvious how pleased everyone was to be together again. The warmth of welcome was extended to those who came for the first time, and those returning after a longer absence. Death Café provides an opportunity to talk about death in depth, in a way we generally don't in our western society. The meetings can support people in their grief, although that's not the primary purpose.

The focus of a Death Café is to face into the reality of death so that life can be lived to the full. It is to help us to lose our complacency about life. Another way of saying this is that Death Café encourages people to live into gratitude for each day. Gratitude can be too painful when we are overwhelmed by grief, so we need the comfort and support of others to journey with us. One of the delights of Death Café is that it provides opportunity for those coming along to care for those new to the group. When new arrivals are walking a grief journey, the care extended from those further along the journey, is a privilege to watch.

At today's meeting, one of the group members said that she'd come to realise that what she most wants to do is care for others, as she had been cared for here.

"Caring for all God's People," is a Mark of the Mission of the Church and the topic of this magazine. Death Café offers the church's care to a group of people often overlooked by society. If you can pay for counselling, support for deep and ongoing grief might be available. If you can't afford it you may join the many who gradually withdraw from friend groups they once belonged to.

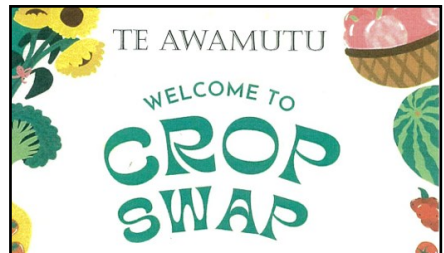
Death Café also provides a place to explore the big questions

about death and how our beliefs about it affect our living. I see this as an amazing opportunity to share Christ's love and hope with others. I also believe that our task as a church is to be continually looking for ways we can care for those we know and those we don't.

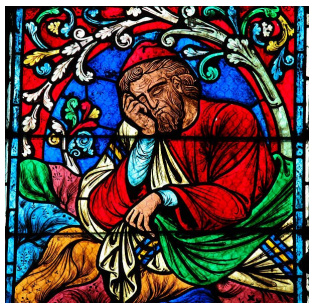
At the same time I think we are called to be observant and creative sharers of Christ's love. When we are observing what people in our community are wanting or needing we can look for ways to offer it. Could we start a cultural meal club for those missing their own food, a kite flying group, or snail racing club? Our intrepid Johanna has joined with friends to begin a Crop Swap. A place for anyone to come armed with their too abundant courgettes and swap for another's abundant rhubarb perhaps. Crop swappers will also share growing and gardening tips, pickles, chutneys and recipes for coping with abundance. It's another wonderful way for a church community to meet with wider community, offering Christ's presence and care through action.

As we approach Lent and Easter I invite you to hold the theme of this magazine, 'Caring for All God's People,' before God. How might God be inviting you to live into this Mark of Mission this season?

Rev'd Julie Guest



SLEEPING IN THE CHURCH



The first night Andrew and I slept in St John's was disconcerting. There is no insulation in the church roof, and there's a LOT of roof. During the day the copper roof absorbs heat. As it cools at night the building suddenly bangs or clonks as things contract. All night there were thumps and groans that kept us on edge.

We were already on high alert, because we were sleeping in St John's to try and catch the copper thieves. The building's noises combined with the number of people walking around the premises during the night meant not much sleep was had that first night. But gradually over the next few weeks, we adjusted to the creaks and groans, and learnt that not everybody walking the premises wanted to harm the building or us.

The night of 17th December was very windy and noisy outside. Inside St John's the movement of the building added extra volume and unpredictability to the usual noises. Suddenly we realised the noise we could hear was not just the wind, but that someone was actually on the roof of the office block attempting to remove more copper. We immediately called police who responded rapidly.

Unfortunately, the thief jumped off the building and escaped by calmly walking up towards Alexandra St and disappearing while police were still concentrating on the church. Although the cameras had captured images of him walking towards St John's, police couldn't identify him, although there was enough information in the images to see that he was not a known Te Awamutu crim. Although we didn't catch the thief that night, we did give him a fright and so far he hasn't returned. At least for now, it seems our remaining copper roof is safe.

But those who want to steal copper now know we have a very large source. Unless we remain vigilant, and eventually either cover or replace the copper with other roofing material, we are vulnerable.

The Loss Adjustor sent by the insurance company has recommended that the cost of a complete replacement of the office block be met. She arranged quotes to consider, and recommended one for acceptance by our insurer. Because the cost of a replacement roof for the office block, at \$125,000, is over the \$50,000 our insurer can approve without a board decision, we await that decision. Meanwhile with patches of our roof stolen, the office block below was unprotected from the weather, so Vestry agreed to pay for a temporary repair with corrugated iron for the first three stolen patches. The final one, where he was disturbed remains only covered with plastic until we get an answer from insurers.

St Paul's was also targeted by the copper thief/ves. On two separate nights in one week they hooked off and stole the copper spouting. We have made no decision to replace the spouting at this stage, again waiting for news from our insurer.

It's upsetting that this has happened and we don't yet know how to resolve it. But our bible tells us that God can and will bring good from bad, for those who seek him.

We have received unexpected support from so many places- from Sterling Security who continue to randomly check on our buildings free of charge, to the CommSafe patrols doing the same, to the people who express their support for all our church does for our community and are shocked anyone would attack it, to the many, many generous people who have made donations to our give-a-little page. Our buildings exist as a basis for our work of being a community who seeks to be and make disciples of Jesus. Whatever happens to the buildings, we will not stop being a Jesus community.

Rev'd Julie Guest

A LIFE CARING FOR GOD'S PEOPLE

I have been able to care for many of God's people in different ways, in different places/countries.

My mother was admitted to hospital in my last year at High School so, as the eldest, I assumed I had to look after the family—father, brother and sister.

After a couple years my father married again so I didn't need to look after the family and was able to 'look after myself' by doing my nursing training. That was a bit of a shock at times as I had a 'protected' upbringing.

Having become a NZ Registered General and Maternity Nurse I set off on a voyage to the UK. Doing private nursing through an agency gave me more, different, experiences. Eventually I became nurse/companion of an upper-class woman who had been in the London Clinic but wanted someone who could live-in (near Hyde Park) and had a driver's licence. I fitted both categories.

While caring for her, but having my meals cooked and served by the maid and taking the dog for a walk in Hyde Park each day, I accompanied her out to St Lucia, in the West Indies, for the English Winter. While I loved the lack of cold weather and the warm sea, I saw a different way of life for the people. (This trip is the reason I love Barbados!)

However, all good things come to an end and I came back home again working at the Waikato Hospital as a Ward Sister, in the Women's Orthopedic Ward. Most of the patients had fallen at home and broken a hip, which at the time meant 2-3 months lying on their back with the leg in traction. Very regular care was needed for those weeks.

After a couple of years I was told the new hospital in Barbados was being opened, so off I went. I was in the Guard of Honour for Prince Phillip when he opened it—(the only white face but he didn't notice).

I was invited to be the Nanny to an English family in Peru, so went down there for 2 years. That was another different experience of caring for God's people.

When I came home after being away for three and a half years and to earn better money here, I became Matron of the Matariki Geriatric Hospital when it opened in 1971. I was really excited to be able to look after elderly people as my father had also died plus my friends were starting to have to care for their parents. There were very few rest homes and the nearest beds were at Waikato Hospital. Many people commented on how nice it was to have their relative so near and not to have to find parking at Waikato Hospital.

I became the Public Health Nurse in Te Awamutu which involved the preventive side of health care, instead of the curative side. It was interesting to work with people in their own homes.

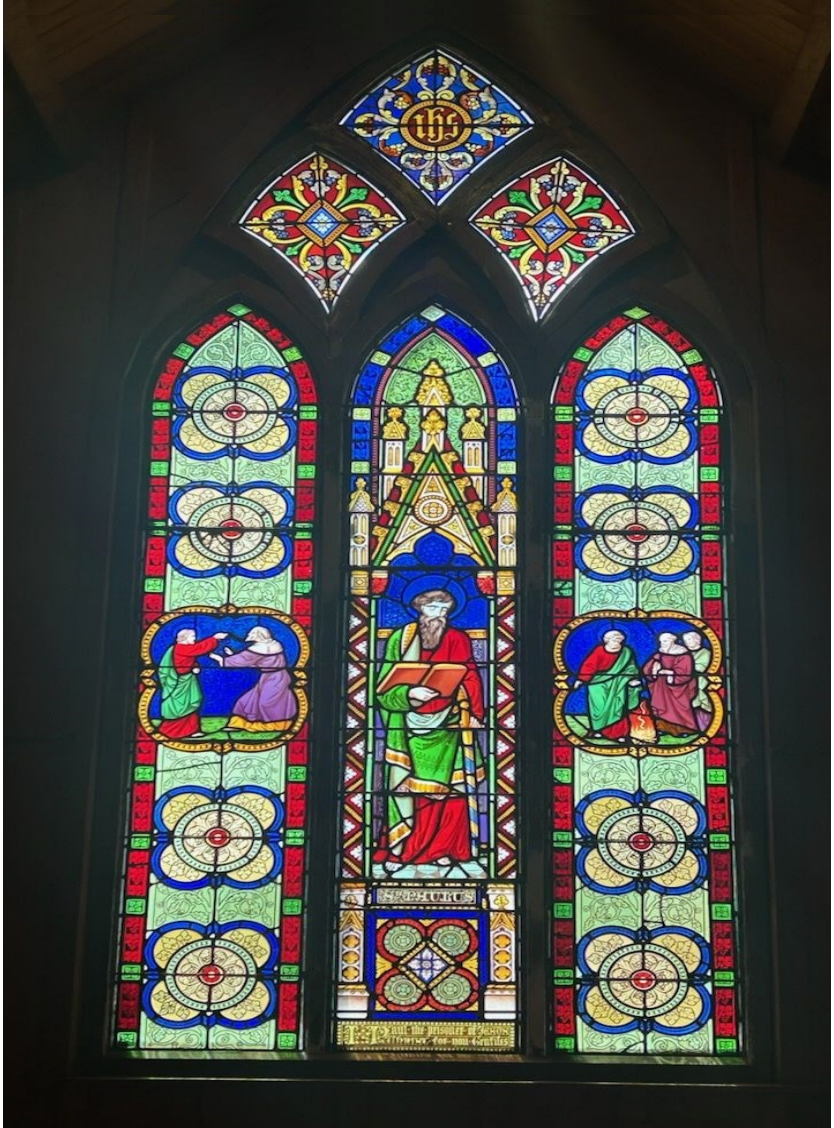
I was married into a Roman Catholic family-but didn't have to change my religion—and saw a different way of caring for God's people. And then I had two daughters and so another period of my life, with all those experiences which were new to me.

I like people and am able to mix, or get along, with many different nationalities, status, and upbringing. I thank God (almost) daily for my life.

Merle Oliver

The window is back!

Thank you to all those who worked on the repairs and installation. And all those who generously donated time, prayers, money, on its restoration .





Eden



"Eden Kate Pullenger arrived very quickly on the 6th of February just after midday, weighing 7.09 pounds. She is absolutely adored by her brother and growing well. We can't wait to introduce her to you all. Thanks for all your support and prayers".

God Bless, Sam



WELCOME
TO THE WORLD
little one



Te Reo Group

A small informal group will be getting together to learn/improve our skill in Te Reo.

Absolute beginners are very welcome. Those with some understanding will get a chance to practise conversation and build confidence. If you're interested in joining us please ring Steph 07-871-3400.

At this stage it looks like Thursday afternoon is the preferred meeting time, for no more than an hour.

Take the plunge!

Reflections on a New Year

Before the last Fellowship meeting I was asked to prepare a short reflection and for the start of the meeting and after I'd shared it with the group the members suggested I should put it in the parish magazine. So here it is.

My Bible reading for the day included 1 Peter 4:10-11 "Each one of you has received a special grace, so, like good stewards responsible for all these different graces of God, put yourselves at the service of others. If you are a speaker, speak words which seem to come from God; if you are a helper, help as though every action was done at God's orders."

Reading this led me to think about how we each feel as we move into a new year. Are we wondering if it's time to relinquish a role we've held? Do we need to accept (however reluctantly) that we can no longer do all that we used to do? What *is* God calling me to do this year?

As I reflected on this reading, it came to me that we fall into two groups - those who are the "servers", still able to be active to some degree, and the "speakers", those who no longer have a great deal of physical ability, but who can still use their voices.

If you are one of the "speakers" you can be vocal in support of those who are the "servers". If you see someone being caring, performing a ministry in church, giving time to help out in some way, thank them, encourage them.

If you are one of the "servers" assess what you can do this year - that may mean changing your role slightly, or perhaps moving

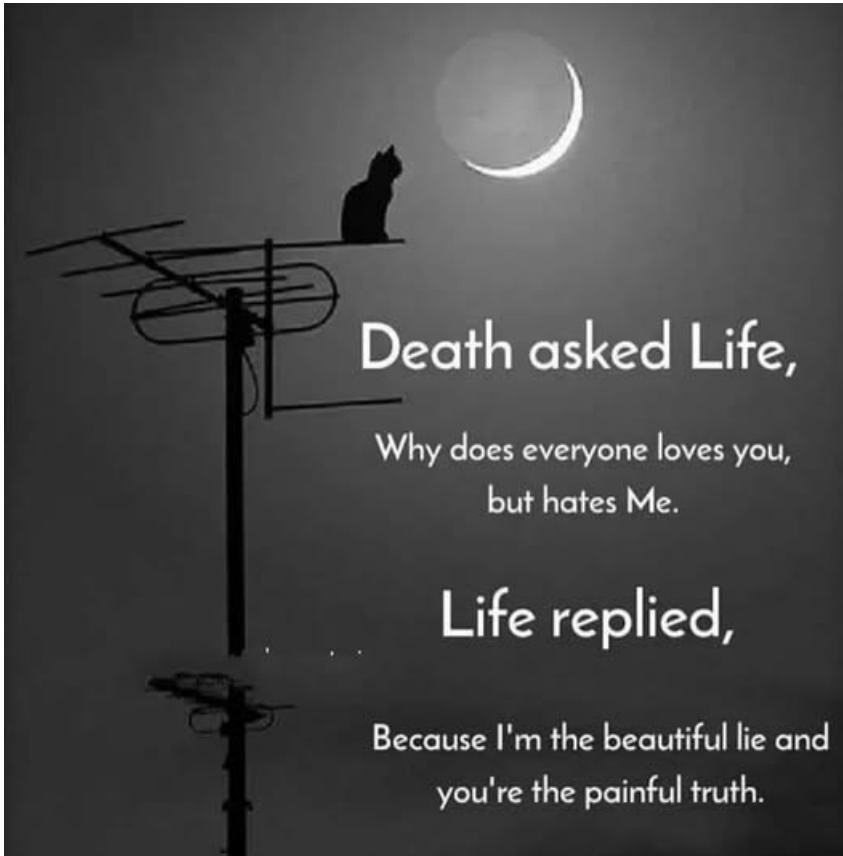
to a different role altogether.

Whichever category you fall into, use the grace you have been given to build up the body of Christ - because no matter our physical ability, or lack of it, every one of us still *has* a ministry, we're *all* still necessary as part of the whole Body of Christ. So let's each of us thank God for what we've been able to do in the past and for whatever we can do now.

Now take a moment to reflect on what grace you have received from God.

Stephanie Owen





A Prayer for Social Concerns

God, open our eyes to the heartbreak around us;
poor housing, poverty, fear, lack of food.
Problems like these rip the heart from the
watcher, but sitting and sighing does no one
much good.

God, make us move to the heart of the problem,
bring social concerns to the head of our list.
With children, their parents, and everyone
gaining the dignity owed, which as yet has been
missed.

From A God for all Seasons by Marilyn Dunn

VESTRY CARES FOR GOD'S PEOPLE AT ST JOHN'S PARISH

Parishioners elect the Vestry each year. The Vestry is responsible for the running of the parish and its finances.

At the Annual General Meeting parishioners vote for a Peoples Warden and the Vicar's Warden.

During an interregnum the Vicar's Warden becomes the Bishop's Warden.

The Lay Ministers have responsibility for the Services at this time.

Vestry cares for God's people at St John's through our AGM.

Sent in by Merle Oliver



World Day of Prayer

Friday 7 March 2025

“I Made you Wonderfully”

You are invited to join in worship
and fellowship at St Patrick's
Church at 10am



HOLY WEEK

Date	Activity	Where & Time
11 April	Palm Cross Making All Welcome	Lounge 11.15am
13 April	Palm Sunday	Old St John's 8am St Saviours 9.15am St John's 10.30am
14 April	Morning Prayer	St Paul's 9am
15 April	Morning Prayer	Old St John's 9am
16 April	Morning Prayer	St Saviours 9am
17 April	<u>Maundy Thursday</u> ♦ Morning Prayer ♦ Eucharist & Foot washing	St John's 8.30am St John's 6.30pm
18 April	<u>Good Friday</u> ♦ Walk of Witness— St Patrick's to St John's ♦ Service of the Last Hour	St Patrick's 10am Old St John's 2pm
20 April	<u>Easter Day</u> ♦ First Light Service & Window Rededication ♦ Breakfast ♦ Eucharist	St Paul's 6.30am St John's 8.15am St John's 9.30am St Saviours 9.15am

What's on in the Parish

<u>Sunday</u>	8.00 am	Service (Old St John's)
	9.00 am	Service (<i>1st & 3rd Sundays</i>) (St Paul's)
	9:15 am	Service (<i>1st, 2nd & 4th</i>) (St Saviours)
	10.30 am	Service (St John's)
<u>Monday</u>	9.30 am	Knit and Natter (Lounge)
	10 -2 pm	Pirongia Craft Group (St Saviours)
	5.00 pm	Monday Meal (Lounge)
<u>Friday</u>	9:30-11 am	Mainly Music (Hall)*
	5.00 -7 pm	Friday Club (Hall)

1st Thursday of the Month Film Night, 7pm, Lounge.

2nd Tuesday of the Month Christian Women's Fellowship, 11am, Lounge.

2nd & 4th Thursday of the Month Bible Study, 12 noon, Lounge

2nd Saturday of the Month Gardening Group at St John's, 9am.

3rd Tuesday of the Month Death Café, 11am, Lounge.

4th Saturday of the Month Crop Swap, 9am, Hall

4th Sunday of the Month Evensong at Te Paariha o Rangiaowhia, 4pm.

5th Sunday of the Month Combined Parish Service, 9.30am

(Check pew sheet closer to date to see if this will go ahead).

5th Sunday of the Month Evensong, Old St John's, 4.30 pm followed by Social Parish Meal at Te Awamutu RSA at 5.30 pm

(If no 5th Sunday in month then RSA Meal will be held on 1st Sunday at 5.30 pm).

*(Gatherings with an * are during term time)*



“Which is more important,” asked Big Panda, “the journey or the destination?”

“The company.” said Tiny Dragon.

So technically Moses was the first man to download files from the cloud using a tablet.



Smiling is infectious
You catch it like the flu

When someone smiled at me
today
I started smiling too

I walked around the corner
And someone saw me grin

When he smiled I realised I
had passed it on to him

I thought about the smile
And then realised its worth

A single smile like mine
Could travel round the earth

So if you feel a smile begin
Don't leave it undetected

Start an epidemic
And get the world infected.

Spike Milligan





HOME CHURCH GROUPS

Rev'd Julie Guest

SOCIAL JUSTICE ISSUES

Rev'd Stephanie Owen - 871-3400

PASTORAL CARE

Bev Anso - 871-6273

ST SAVIOUR BIBLE STUDY

NICK & ROS EMPSON— 871 9586

PRAYER CHAIN

Steve Anso - 871-6273

MUSIC TEAM CONTACT

Laurel Smith - 870-3326

MAGAZINE

Office - stjohms.awa@xtra.co.nz

OP SHOP

Office—stjohms.awa@xtra.co.nz

MONDAY MEAL

Sam Pullenger - contact office

INTEREST GROUPS

CHRISTIAN WOMEN'S FELLOWSHIP

Bev Anso - 871-6273

CURSILLO

Annette Rea - 871-8032

KNIT & NATTER

Office - 871-5568

GARDEN GROUP

Els Brown - 027 279-8044

PIRONGIA CHURCH CRAFT GROUP

Barbara Preece - 027 871-9494

YOUTH

MAINLY MUSIC - ST JOHN'S

Contact Office - 871-5568

FRIDAY CLUB

Contact Office - 871-5568

(during school term for children 5-13yrs)

HOLIDAY PROGRAMME

Sam Pullenger - sampsjc3@gmail.com

DIOCESAN WEBSITE - WITH LINK TO OUR SITE

www.waikato.anglican.org.nz

PARISH TEAM

VESTRY

Christine Bryant (*Synods Person*) Helen Stubbs (*Synods Person*) Murray Gardiner, Coral Loomb, Els Brown, Paul Bryant, Jocelyn Taylor, Sam Pullenger. Warren Timms

VICAR'S WARDEN

Christine Bryant

PEOPLE'S WARDEN

Coral Loomb

LICENSED LAY MINISTERS

Annette Rea, Helen Stubbs, Christine Bryant,

VICAR Rev'd Julie Guest - 027 420-5375

ASSISTANT PRIEST

Rev'd Steph Owen 871-3400

ASSISTANT PRIEST

Rev'd Michele Willis

MINISTER IN FORMATION

Sam Pullenger - sampsjc3@gmail.com

PARISH OFFICE HOURS: Monday: 10am - 1pm , Tuesday-Friday: 9am - 1 pm

ADMINISTRATOR: Maggie Crossan **PHONE:** 871 5568

EMAIL: stjohms.awa@xtra.co.nz **WEBSITE:** stjohmsparishteawamutu.com

FACEBOOK: Parish of St John, Te Awamutu—@stjohms.awa@xtra.co.nz

